



IMT-1B12D001-6

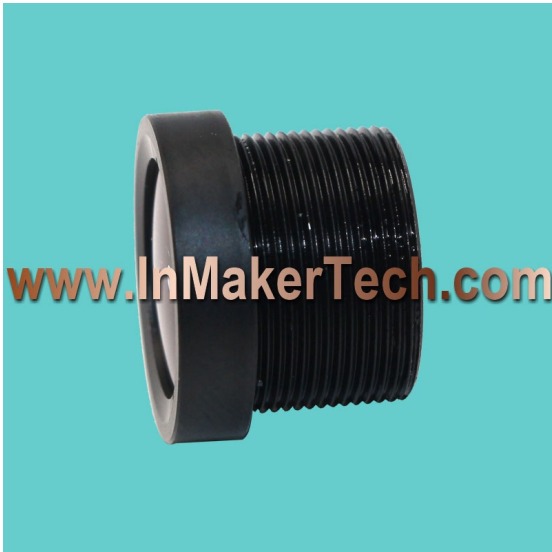
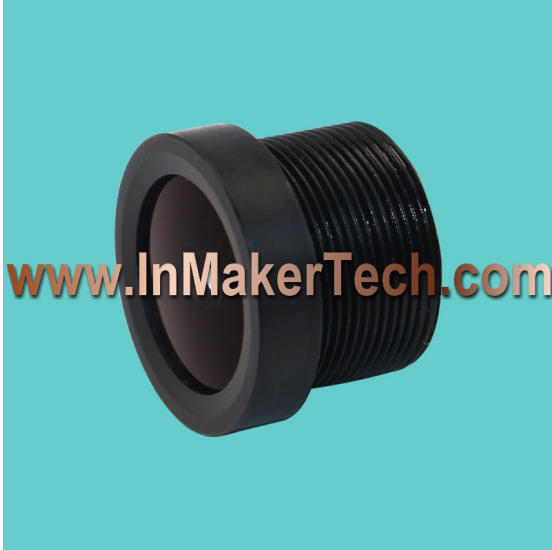
1/2.9" 5MP CSP F2.4 DFOV 147 Degree M12 Lens



Lens Model	IMT-1B12D001-6
Sensor Format	1/2.9"
Resolution	5 MP
Sensor Type	CSP
Structure	5G + IR Filter
Max Image Circle	Ø6.2
F/NO.	2.4 +/- 5%
EFL (mm)	2.50
TTL (mm)	14.50
FOV	Field of View
Diagonal DFOV	147°
Horizontal HFOV	115°
Vertical VFOV	70°
TV Distortion	<30.5%
CRA	<12°
Lens Filter	650nm +/- 10nm @50%
Barrel	M12*P0.5
KLT Camera Modules	JAL-OV4689 V1.0
Use IMT Made Lenses	JAL-OV4689 V3.0

IMT-1B12D001-6

1/2.9" 5MP CSP F2.4 DFOV 147 Degree M12 Lens



IMT Lens on
the real
Camera

KLT is our
Camera
Modules
Design and
Manufacture
Partner

www.KaiLapTech.com



www.InMakerTech.com Sales@InMakerTech.com China: (+86) 17727326718 HK: (+852) 69089316

All rights reserved @ InnoMaker Technologies Limited. Specifications subject to change without notice.

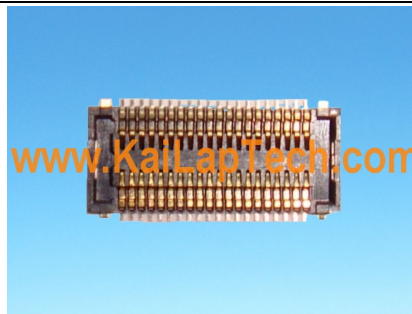
JAL-OV4689 V1.0

OmniVision OV4689 MIPI Interface Fixed Focus 4MP Camera Module



Camera Module No.	JAL-OV4689 V1.0
Image Sensor	OV4689
EFL	2.50 mm
F.NO	2.4
Pixel	2688 x 1520
View Angle	147°
Lens Type	1/3 inch
Lens Dimensions	13.70 x 13.70 x 15.32 mm
Module Size	40.05 x 13.70 mm
Module Type	Fixed Focus
Interface	MIPI
IMT Lens Model	IMT-1B12D001-6

Mating Connector Part No. AXK7L40223G



Mating Connector On Main Board. Sold Separately.



JAL-OV4689 V3.0

OmniVision OV4689 MIPI Interface Fixed Focus 4MP Camera Module

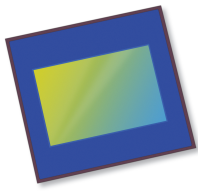


Camera Module No.	JAL-OV4689 V3.0
Image Sensor	OV4689
EFL	2.50 mm
F.NO	2.4
Pixel	2688 x 1520
View Angle	147°
Lens Type	1/3 inch
Lens Dimensions	13.70 x 13.70 x 15.32 mm
Module Size	40.05 x 13.70 mm
Module Type	Fixed Focus
Interface	MIPI
IMT Lens Model	IMT-1B12D001-6

Mating Connector Part No. DF30FC-40DS-0.4V



Mating Connector On Main Board. Sold Separately.



OV4689 4MP product brief



High Frame Rate 4-Megapixel CameraChip™ Sensor with Excellent Low-Light Sensitivity and High Dynamic Range for Security Applications

lead free
available in
a lead-free
package

The OV4689 is a high performance 4-megapixel CameraChip sensor in a native 16:9 format designed for next-generation surveillance and security systems. The sensor utilizes an advanced 2-micron OmniBSI-2™ pixel to provide best-in-class low-light sensitivity and high dynamic range (HDR).

The 1/3-inch OV4689 can capture full-resolution 4-megapixel high definition (HD) video at 90 frames per second (fps), 1080p HD at 120 fps, and binned 720p HD at 180 fps. The sensor's high frame rates enable crisp, clean image and video capture of fast moving objects.

The OV4689 provides timing to capture full-resolution HDR using frame-based "sequential HDR" or line-based "staggered HDR", and quarter resolution HDR using

"alternate row HDR". The benefits of using "staggered HDR" compared to "sequential HDR" are significant reduction in motion artifacts and lower memory requirement for host processing. These modes produce high quality full-resolution 4-megapixel HDR video under extreme variations of bright and dark conditions, ensuring high contrast and excellent scene reproduction.

The OV4689 features a high-speed 4-lane MIPI serial output interface to facilitate the required high data transfer rate. The OV4689 is available in a chip scale package (CSP).

Find out more at www.ovt.com.



Applications

- Security and Surveillance

Product Features

- automatic black level calibration (ABLC)
- programmable controls for frame rate, mirror and flip, cropping, and windowing
- static defective pixel canceling
- supports output formats: 10-bit RAW RGB (MIPI)
- supports horizontal and vertical subsampling
- supports images sizes: 4MP, 3MP, EIS1080p, 1080p, EIS720p
- fast mode switching
- support 2x2 binning, 4x4 binning, re-sampling filter
- standard serial SCCB interface
- up to 4-lane MIPI serial output interface
- embedded 4K bits one-time programmable (OTP) memory for part identification, etc
- two on-chip phase lock loops (PLLs)
- programmable I/O drive capability
- built-in temperature sensor
- supports staggered, sequential and alternative row HDR timing

OV4689



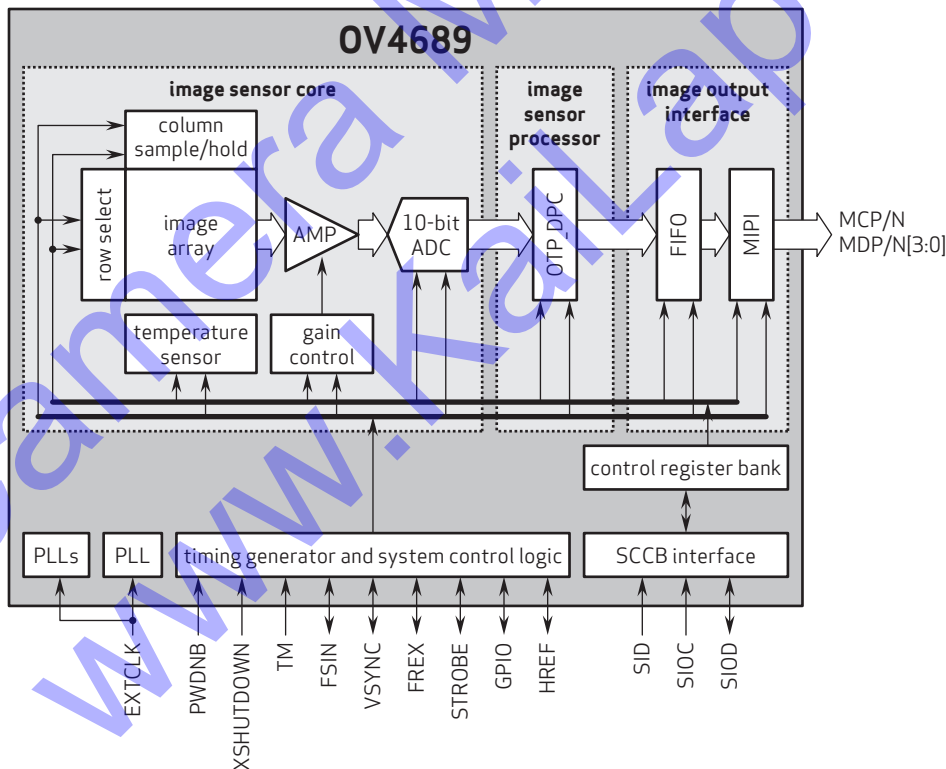
Ordering Information

- OV04689-H67A (color, lead-free, 67-pin CSP5)

Product Specifications

- active array size: 2688 x 1520
- max S/N ratio: 38.3 dB
- power supply:
 - core: 1.1 - 1.3V
 - analog: 2.6 - 3.0V
 - I/O: 1.7 - 3.0V
- dynamic range: 64.6 dB @ 1x gain
- power requirements:
 - active: 163 mA (261 mW)
 - standby: 1 mA
 - XSHUTDOWN: $\lt; 10 \mu\text{A}$
- temperature range:
 - operating: -30°C to +85°C junction temperature
 - stable image: 0°C to +60°C junction temperature
- output formats: 10-bit RAW RGB data
- maximum image transfer rate:
 - 2688x1520: 90 fps
 - 1920x1080: 120 fps
 - 1280x720: 180 fps
- lens size: 1/3"
- input clock frequency: 6 - 64 MHz
- lens chief ray angle: 0°
- sensitivity: 1900 mV/lux-sec
- scan mode: progressive
- maximum exposure interval: 1548 x T_{ROW}
- pixel size: 2 μm x 2 μm
- dark current: 4 mV/sec @ 60°C junction temperature
- image area: 5440 μm x 3072 μm
- package dimensions: 6630 μm x 5830 μm

Functional Block Diagram



4275 Burton Drive
Santa Clara, CA 95054
USA

Tel: + 1 408 567 3000
Fax: + 1 408 567 3001
www.ovt.com

OmniVision reserves the right to make changes to their products or to discontinue any product or service without further notice. OmniVision and the OmniVision logo are registered trademarks of OmniVision Technologies, Inc. CameraChip, OmniBSI-2, OmniBSI+ and OmniBSI are trademarks of OmniVision Technologies, Inc. All other trademarks are the property of their respective owners.



OmniVision